

# Northeastern IPM Center Partnership Grant Impacts



[www.northeastipm.org](http://www.northeastipm.org)



## TickEncounter Web Portal Combining Tick Testing With Outreach (2015)

Project Director: Thomas Mather - University of Rhode Island

Author: David Lane - Cornell University

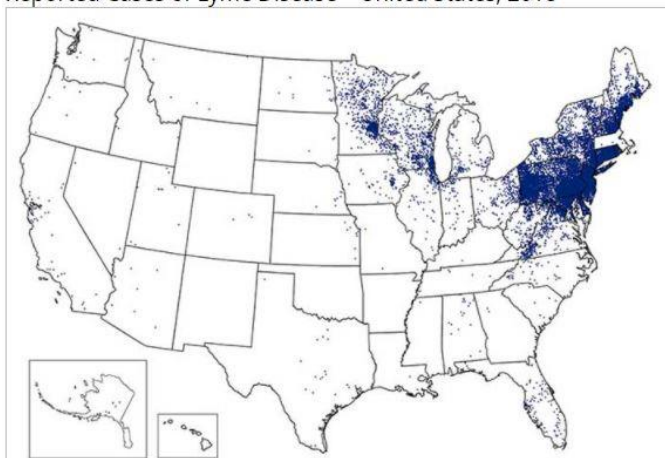
### THE NEED



Photo: [web.uri.edu/tickencounter/resources/tick-bite-ology/](http://web.uri.edu/tickencounter/resources/tick-bite-ology/)

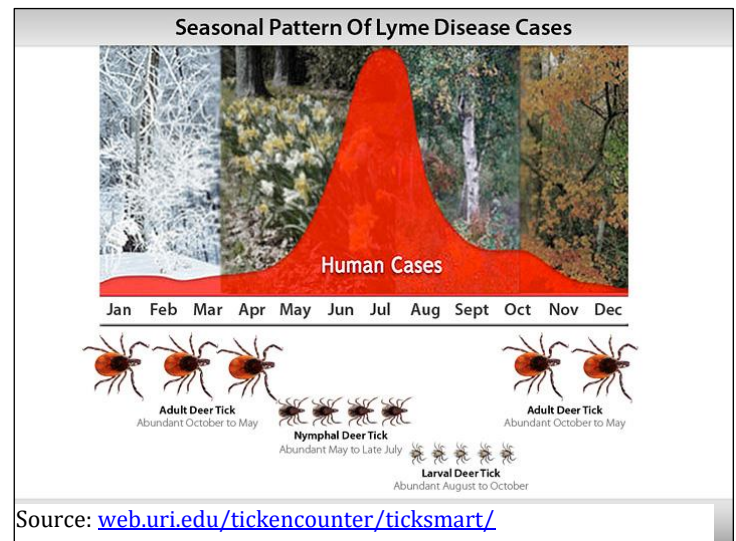
- "I just found this tick! Will I get Lyme disease?" These days, it's an all too common question in the Northeastern U.S. and across America.
- The Centers for Disease Control (CDC) now indicates that **more than 300,000 new cases of Lyme disease are diagnosed each year across America**. More generally, tickborne disease statistics show that the **Northeastern states report about 90% of all human and pet cases**.
- Health economists estimate that the current cost to the U.S. healthcare system alone is between **\$712 million and \$1.3 billion annually**.  
[journals.plos.org/plosone/article?id=10.1371/journal.pone.0116767](http://journals.plos.org/plosone/article?id=10.1371/journal.pone.0116767)
- Making matters worse and health costs even higher is the increasing incidence of other tickborne illnesses like babesiosis, anaplasmosis, ehrlichiosis, Rocky Mountain Spotted Fever, and encephalitic viruses such as Powassan which appear to be increasing as their tick vector ranges expand. [ncbi.nlm.nih.gov/pubmed/24724282](http://ncbi.nlm.nih.gov/pubmed/24724282)

Reported Cases of Lyme Disease - United States, 2018



Source: [cdc.gov/lyme/stats/maps.html](http://cdc.gov/lyme/stats/maps.html)

Seasonal Pattern Of Lyme Disease Cases



Source: [web.uri.edu/tickencounter/ticksmart/](http://web.uri.edu/tickencounter/ticksmart/)

This work is supported by Crop Protection and Pest Management Program (CPPM) grant numbers 2018-70006-28882 and 2014-70006-22484 from the USDA National Institute of Food and Agriculture. Any opinions, findings, conclusions, or recommendations expressed in this publication are those of the author(s) and do not necessarily reflect the view of the U.S. Department of Agriculture.

## IMPACTS

- The **TickEncounter Web Portal** is a *user-friendly platform* for combining tick risk assessment and testing with tick protection outreach.
- TickEncounter is keeping track of tick encounters using TickSpotters.
- TickSpotters is a crowd-sourced tick survey with tailored responses for people who have encountered a tick.
- Nearly 10,000 people used TickSpotters, and over 25% took at least one of the recommended TickSmart™ actions.
- **TickSmart™** focuses on providing people at risk for dangerous (or even just yucky) tickencounters with simple, effective strategies - **EVERY DAY PRACTICES** - for TickSafe living.
- **By recording location and date, and submitting an identification or picture\*\*, together we can improve tick bite risk warning systems** to bring seasonally- and spatially-relevant prevention messages to the broadest audience possible.
- **\*\*TickEncounter staff can help identify ticks based on the image and geographical location.**
- Thousands of citizen scientists are driving TickEncounter's Current Tick Activity app.
- The Project Director received over \$8,000 in crowdfunding for “Can tick photos prevent Lyme disease?”

TickEncounter Resource Center Tick Identification Chart ©							Region select
Species	Larva	Nymph	Male	Female	Partially Fed Female	Fully Fed Female	Left-click a region below in order to load ticks from that region
Deer Tick <i>Ixodes scapularis</i>							High Relative abundance in this region CT, RI, MA, NH, VT, ME New England Mid Atlantic South Atlantic E/N Central E/S Central W/N Central W/S Central Mountain Pacific
Dog Tick <i>Dermacentor variabilis</i>							
Lone Star Tick <i>Amblyomma americanum</i>							
Brown Dog Tick <i>Rhipicephalus sanguineus</i>							

Source: [web.uri.edu/tickencounter/fieldguide/](http://web.uri.edu/tickencounter/fieldguide/)



Source: [web.uri.edu/tickencounter/be-ready-for-ticks-sign-order/](http://web.uri.edu/tickencounter/be-ready-for-ticks-sign-order/)

The image shows two informational posters. The left poster is titled "Only blacklegged ticks transmit Lyme disease." and features a large illustration of a blacklegged tick. Below the title, it lists "Other ticks you might find biting" including Lone star ticks and American dog ticks, with small illustrations of each. The right poster is titled "Be TickSmart. Stay TickSafe! Check for Ticks Every Day." and features silhouettes of a child and an adult with yellow boxes highlighting areas to check for ticks: Scalp, Ears, Underarms, Belly Button, Waist & Back, Behind Knees, Pelvic Area, and In Between Legs. A vertical strip on the right of the second poster shows various tick species and their life stages.

Source: [web.uri.edu/tickencounter/store/](http://web.uri.edu/tickencounter/store/)

## WEBSITES

- <https://web.uri.edu/tickencounter/tickspotters/submit/>
- <https://web.uri.edu/tickencounter/ticksmart/>
- [experiment.com/projects/can-we-use-crowd-sourced-tick-surveillance-to-improve-prevention-behaviors](https://experiment.com/projects/can-we-use-crowd-sourced-tick-surveillance-to-improve-prevention-behaviors)
- [twitter.com/tickencounter](https://twitter.com/tickencounter)
- <https://web.uri.edu/tickencounter/be-ready-for-ticks-/>

This work is supported by Crop Protection and Pest Management Program (CPPM) grant numbers 2018-70006-28882 and 2014-70006-22484 from the USDA National Institute of Food and Agriculture. Any opinions, findings, conclusions, or recommendations expressed in this publication are those of the author(s) and do not necessarily reflect the view of the U.S. Department of Agriculture.