

Brown Marmorated Stink Bug Activities in Ornamental Systems and Research Plans for 2011

Paula Shrewsbury, Michael Raupp, and Holly Martinson

Department of Entomology, University of Maryland

pshrewsbury@umd.edu

Eastern Branch Entomological Society of America

March 19, 2011



UNIVERSITY OF
MARYLAND
EXTENSION

Solutions in your community



Brown Marmorated Stink Bug: Ornamentals

- Ornamental host plants
- Patterns in ornamentals
 - Abundance, movement
 - Damage
- Research to date
- Future research plans

BMSB Ornamental Host Plants (56 genera, 80+ species)

Plant type	Common name	Genus	species
woody	glossy abelia	<i>Abelia</i>	<i>grandiflora</i>
woody	hedge maple	<i>Acer</i>	<i>campestre</i>
woody	Japanese maple	<i>Acer</i>	<i>palmatum</i>
woody	Norway maple	<i>Acer</i>	<i>platanoides</i>
woody	sycamore maple	<i>Acer</i>	<i>pseudoplatanus</i>
woody	red maple	<i>Acer</i>	<i>rubrum</i>
woody	sugar maple	<i>Acer</i>	<i>saccharum</i>
woody	maple	<i>Acer</i>	<i>spp.</i>
woody	serviceberry, shadbush	<i>Amelanchier</i>	<i>spp.</i>
woody	birch	<i>Betula</i>	<i>spp.</i>
woody	butterfly bush	<i>Buddleia</i>	<i> davidii</i>
woody	butterfly bush	<i>Buddleia</i>	<i>spp.</i>
woody	tea-oil camellia	<i>Camellia</i>	<i>oleifera</i>
woody	catalpa	<i>Catalpa</i>	<i>spp.</i>
woody	bittersweet	<i>Celastrus</i>	<i>spp.</i>
woody	hackberry	<i>Celtis</i>	<i>occidentalis</i>
woody	eastern redbud	<i>Cercis</i>	<i>canadensis</i>
woody	yellow wood	<i>Cladrastis</i>	<i>kentukea</i>
woody	gray dogwood	<i>Cornus</i>	<i>racemosa</i>
woody	redosier dogwood	<i>Cornus</i>	<i>sericea</i>
woody	Hawthorn	<i>Crataegus</i>	<i>spp.</i>
woody	Japanese cedar	<i>Cryptomeria</i>	<i>spp.</i>
woody	cypress	<i>Cupressus</i>	<i>spp.</i>
woody	Leyland cypress	<i>Cupressocyparis</i>	<i>leylandii</i>
woody	Russian olive	<i>Elaeagnus</i>	<i>angustifolia</i>
woody	winged euonymus	<i>Euonymus</i>	<i>alatus</i>
woody	Euonymus	<i>Euonymus</i>	<i>spp.</i>
woody	white ash	<i>Fraxinus</i>	<i>americana</i>
woody	ash	<i>Fraxinus</i>	<i>spp.</i>
woody	honey locust	<i>Gleditsia</i>	<i>triacanthos</i>
woody	Chinese hibiscus	<i>Hibiscus</i>	<i>rosa-sinensis</i>
woody	hibiscus	<i>Hibiscus</i>	<i>spp.</i>
woody	American holly	<i>Ilex</i>	<i>opaca</i>
woody	winterberry holly	<i>Ilex</i>	<i>verticillata</i>
woody	holly	<i>Ilex</i>	<i>spp.</i>
woody	walnut	<i>Juglans</i>	<i>nigra</i>
woody	goldenrain tree	<i>Koelreuteria</i>	<i>spp.</i>
woody	privet	<i>Ligustrum</i>	<i>spp.</i>
woody	tulip tree	<i>Liriodendron</i>	<i>tulipifera</i>
woody	honeysuckle	<i>Lonicera</i>	<i>spp.</i>

Plant type	Common name	Genus	species
woody	Star magnolia	<i>Magnolia</i>	<i>stellata</i>
woody	crab apple	<i>Malus</i>	<i>spp.</i>
woody	mimosa	<i>Mimosa</i>	<i>spp.</i>
woody	mulberry	<i>Morus</i>	<i>spp.</i>
woody	princess tree	<i>Paulownia</i>	<i>tortomosa</i>
woody	Paulownia	<i>Paulownia</i>	<i>spp.</i>
woody	sycamore	<i>Platanus</i>	<i>occidentalis</i>
woody	black cherry	<i>Prunus</i>	<i>serotina</i>
woody	Yoshino cherry	<i>Prunus</i>	<i>x. yedoensis</i>
woody	Ornamental fruit trees	<i>Prunus</i>	<i>spp.</i>
woody	firethorn	<i>Pyracantha</i>	<i>coccinea</i>
woody	firethorn	<i>Pyracantha</i>	<i>spp.</i>
woody	Bradford pear	<i>Pyrus</i>	<i>calleryana</i>
woody	oak	<i>Quercus</i>	<i>spp.</i>
woody	buckthorn	<i>Rhamnus</i>	<i>spp.</i>
woody	sumac	<i>Rhus</i>	<i>spp.</i>
woody	rugosa rose	<i>Rosa</i>	<i>rugosa</i>
woody	rose	<i>Rosa</i>	<i>spp.</i>
woody	Willow	<i>Salix</i>	<i>spp.</i>
woody	mountainash	<i>Sorbus</i>	<i>spp.</i>
woody	Spirea	<i>Spirea</i>	<i>spp.</i>
woody	Stewardia	<i>Stewardia</i>	<i>pseudocamellia</i>
woody	Japanese tree lilac	<i>Syringa</i>	<i>reticulata</i>
woody	lilac	<i>Syringa</i>	<i>spp.</i>
woody	linden	<i>Tilia</i>	<i>americana</i>
woody	basswood	<i>Tilia</i>	<i>spp.</i>
woody	elm	<i>Ulmus</i>	<i>spp.</i>
woody	blackhaw viburnum	<i>Viburnum</i>	<i>prunifolium</i>
woody	tea viburnum	<i>Viburnum</i>	<i>setigerum</i>
woody	viburnum	<i>Viburnum</i>	<i>spp.</i>
woody	zelkova	<i>Zelkova</i>	<i>serrata</i>
herbaceous/annual	cock's comb	<i>Celosia</i>	<i>argentea</i>
herbaceous/annual	chrysanthemum	<i>Chrysanthemum</i>	<i>spp.</i>
herbaceous/annual	spider flower	<i>Cleome</i>	<i>spp.</i>
herbaceous/annual	dahlia	<i>Dahlia</i>	<i>spp.</i>
herbaceous/annual	sunflower	<i>Helianthus</i>	<i>annuus</i>
herbaceous/annual	sunflower	<i>Helianthus</i>	<i>spp.</i>
herbaceous/annual	impatiens	<i>Impatiens</i>	<i>spp.</i>
herbaceous/annual	tiger lily	<i>Lilium</i>	<i>spp.</i>
herbaceous/annual	zinnia	<i>Zinnia</i>	<i>spp.</i>

BMSB - a new pest of woody plants



**Serviceberry
(Amelanchier sp.)**

Feeding only hosts

Feeding and reproducing hosts

Varietal differences

Temporal differences



BMSB - a new pest of woody plants



Damage:

- Wounding / wet spots
- Discoloration to foliage
- Tree stress ?
- Plant death reported (herbaceous)
- Disease transmission, secondary infections



BMSB - a new pest of woody plants



Movement onto Nursery Crops - Early Fall 2010

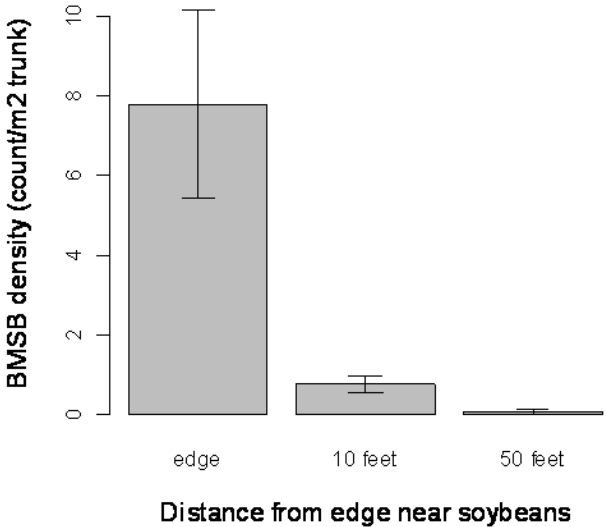
•Feeding on trunks of trees



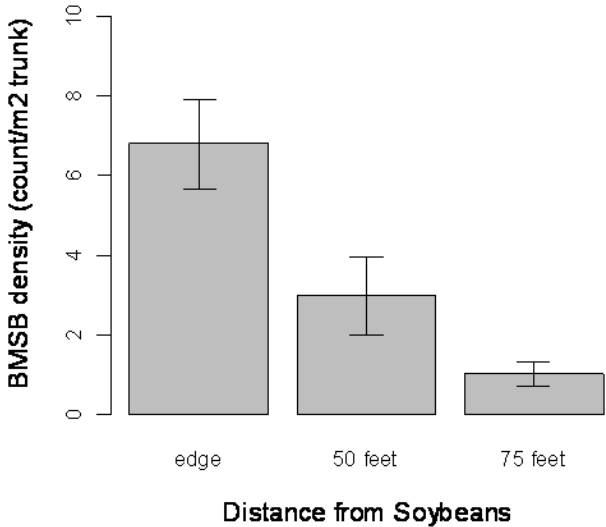
•Response to senescence or harvest of crops?
•Fattening up for winter?

BMSB densities with respect to crop edges at Ruppert Nursery

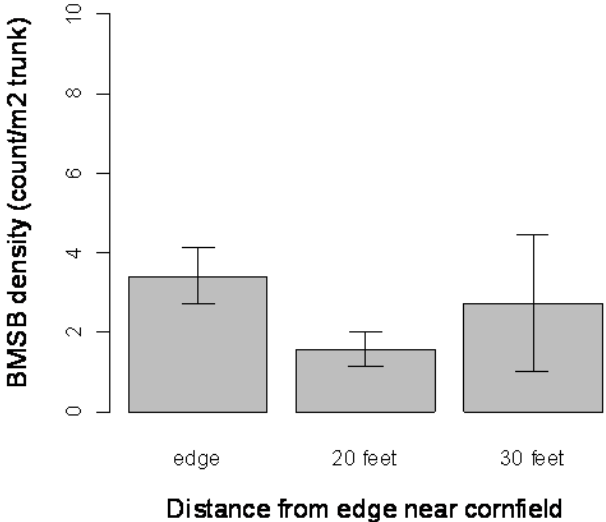
Ruppert: BMSB on maple (Red Sunset)



Ruppert: BMSB on sycamore (London Plane)



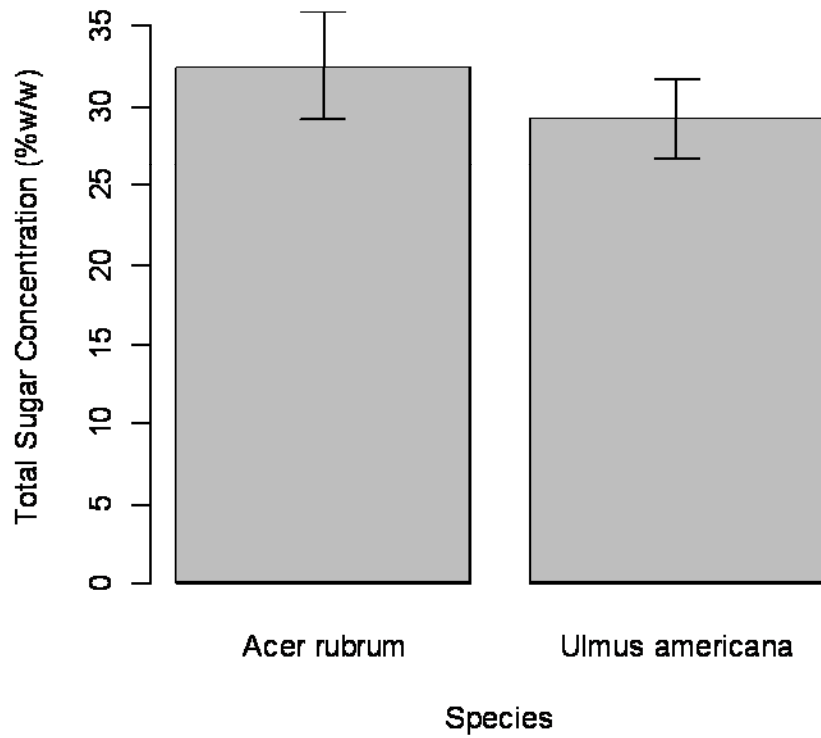
Ruppert: BMSB on maple (October Glory)



August 31, 2010

Ants and stinging Hymenoptera attracted to feeding wounds





**Sugar concentration in sap
of *Acer rubrum* and *Ulmus
americana***

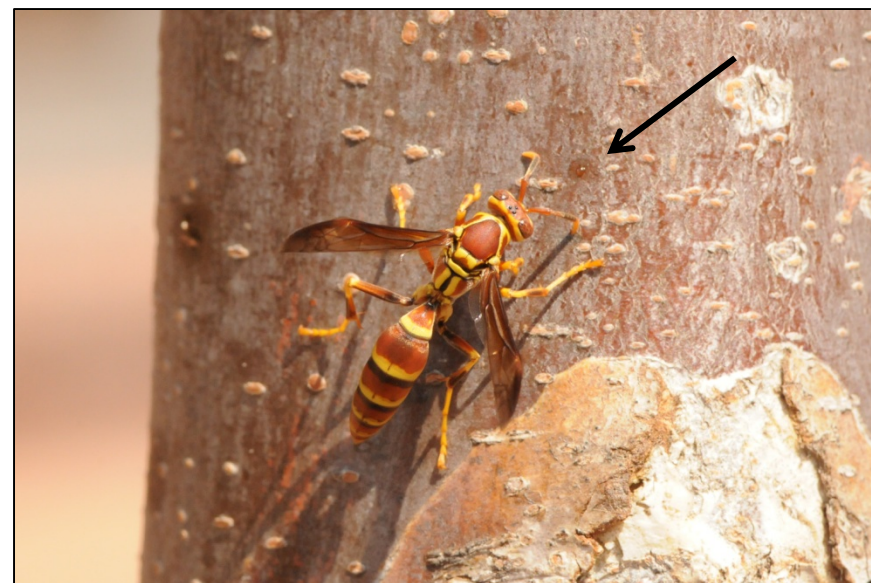
Table S1. Sugar concentrations (%w/w, mean \pm 1 SE) of different plant tissues compiled from the literature.

Resource	Sugar Concentration (\pm 1 SE)	n	References
Xylem	4.67 (\pm 2.7)	3	1, 2
Leaf Tissue	14.6 (\pm 8.43)	3	3
Phloem	19.28 (\pm 4.54)	18	4-17
Extrafloral Nectar	21.25 (\pm 5.15)	17	18, 19
Floral Nectar	23.08 (\pm 1.67)	190	19-26
Honeydew	24.05 (\pm 6.43)	14	6, 16, 19, 27
Wound Sap	42.64 (\pm 30.15)	2	19
Overall	22.56 (\pm 1.44)	247	

Sugar concentration:

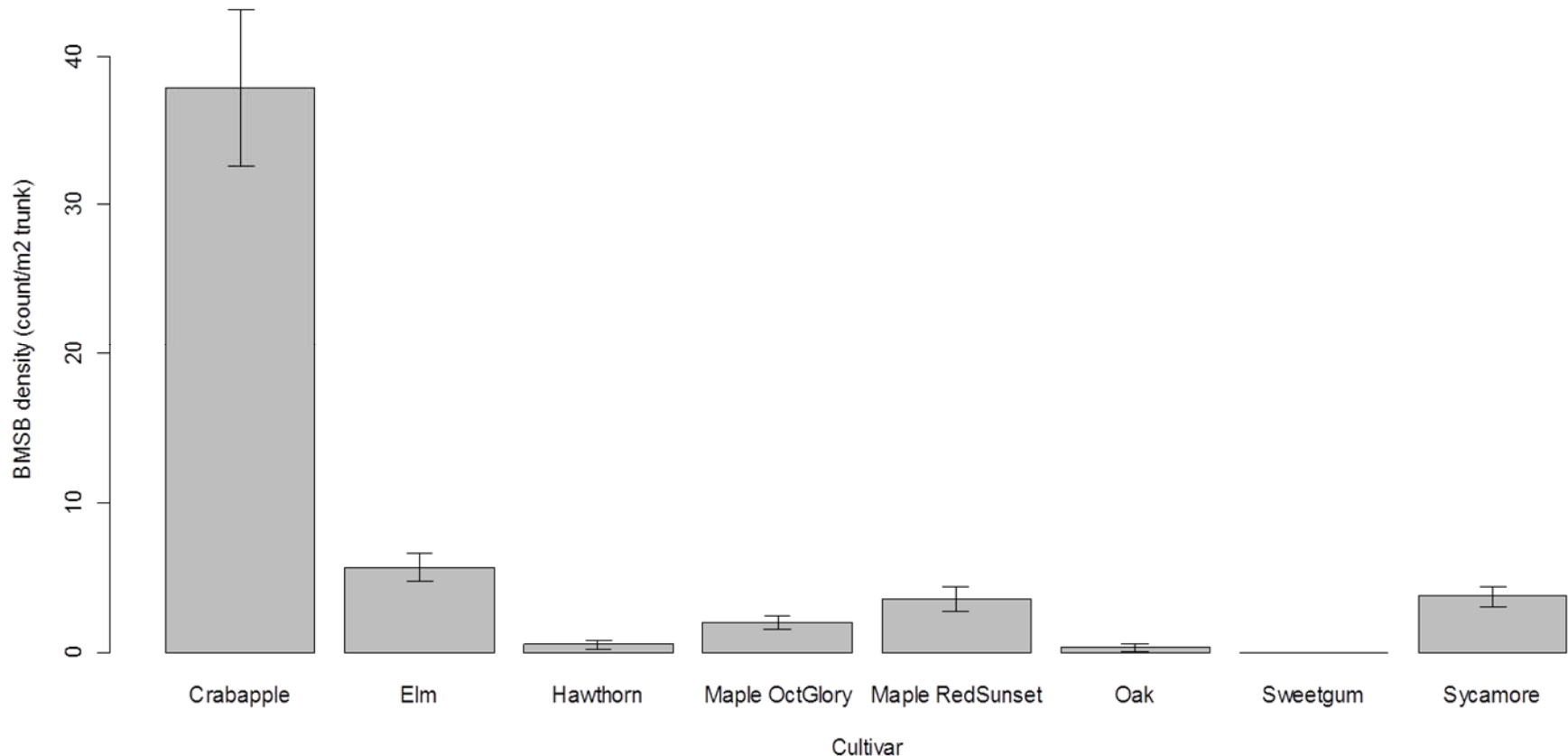
Ulmus americana - 30%

Acer rubrum - 33%



Management - resistant plants

BMSB across sites and cultivars



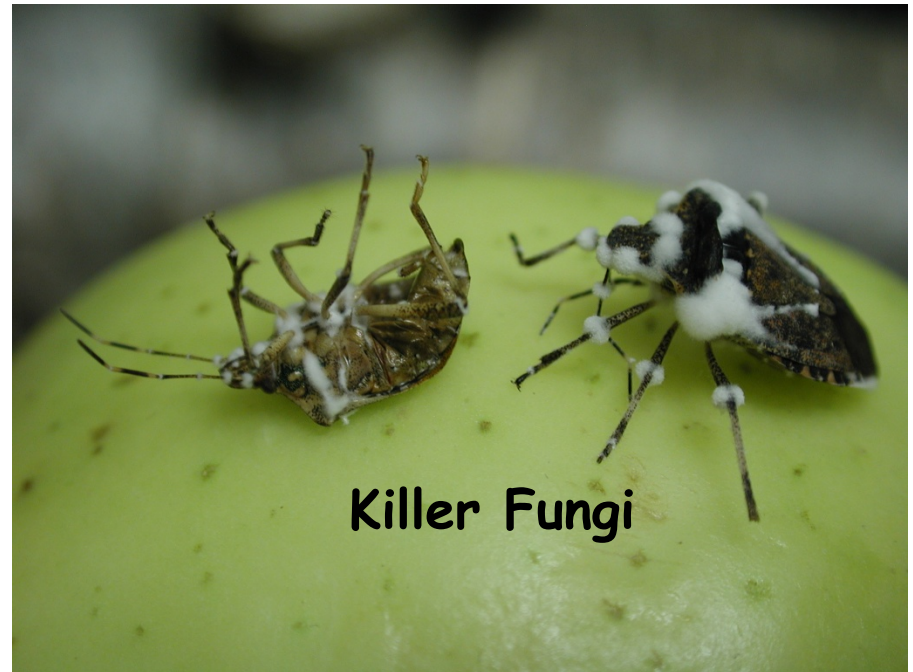
Develop BMSB resistant landscapes, reduce overwintering populations in structures

Future Research and Collaborations

- **Host plant use**
 - Feeding, reproduction, phenology/biology
 - Damage and thresholds
 - Greenhouse and nurseries
- **Spatial patterns**
 - Movement between overwintering habitats and crops
 - Geospatial analysis - landscape level relationships
 - Common sampling method across commodities and regions
- **Optimizing trap design (monitoring, control)**
 - Light and pheromone
- **Pesticide evaluations**

Attract and Kill Strategy

Entomopathogenic
fungi

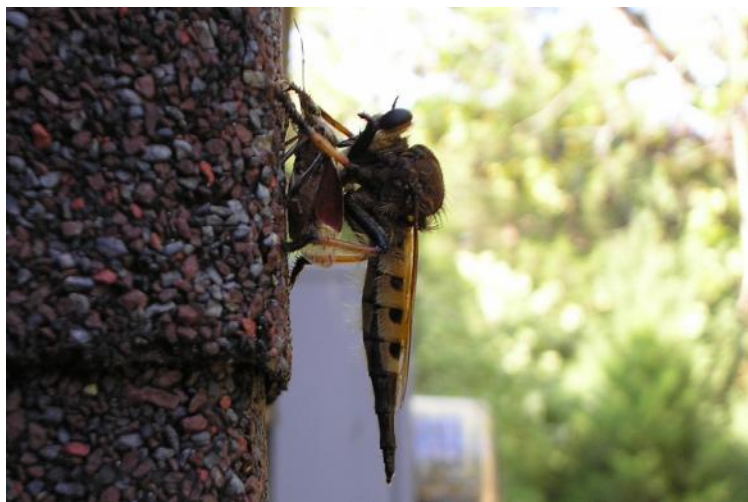


Killer Fungi



Biological Control -

- Indigenous predators and parasitoids
- Survey and conservation through habitat manipulation



Thanks for listening to a stinky story...

Paula Shrewsbury
University of Maryland
pshrewsbury@umd.edu



Ornamental BMSB Group:

Paula Shrewsbury, UMD
George Hamilton, Rutgers
Mike Raupp, UMD
Holly Martinson, UMD
Stanton Gill, UMD
Karen Rane, UMD
Brian Kunkel, UDel
Jana Lee, USDA ARS, Oregon
others...

Ornamental plant hosts

(56 genera, 80+ species)

Woody plant hosts include: *Abelia* spp., *Acer* spp. (maple), *Buddleia* spp. (butterfly bush), *Catalpa* spp., *Celosia argentea* L. (celosia), *Cercis canadensis* (Eastern Redbud), *Cladrastis kentukea* (yellow wood), *Gleditsia triacanthos* (honey locust), *Hibiscus rosa-sinensis* L. (hibiscus), *Liriodendron tulipifera* (tulip tree), *Lonicera* spp. (honeysuckle), *Malus* spp. (crab apples), *Paulownia* spp. (princess tree), *Platanus* spp. (sycamore), *Prunus serotina* (black cherry), *Prunus x. yedoensis* (Yoshino cherry), *Quercus* spp. (oak), *Rosa rugosa*, *Syringa* spp. (lilac), *Ulmus* spp. (elm), and *Zelkova serrata* (zelkova)

Herbaceous plant hosts include: *Cleome* spp. (spider flower), *dahlia* spp., *Helianthus annuus* (sunflower), *zinnia* spp., and even some weeds such as burdock (*Articum* spp.)