







"It doesn't look damaged, it just looks dead." ~ Maine apple grower #1

"I can't stop doing something I'm not doing in the first place" ~ Maine apple grower #2













Discoloration indicates phloem damage?



Blank leaf free area on shoot.





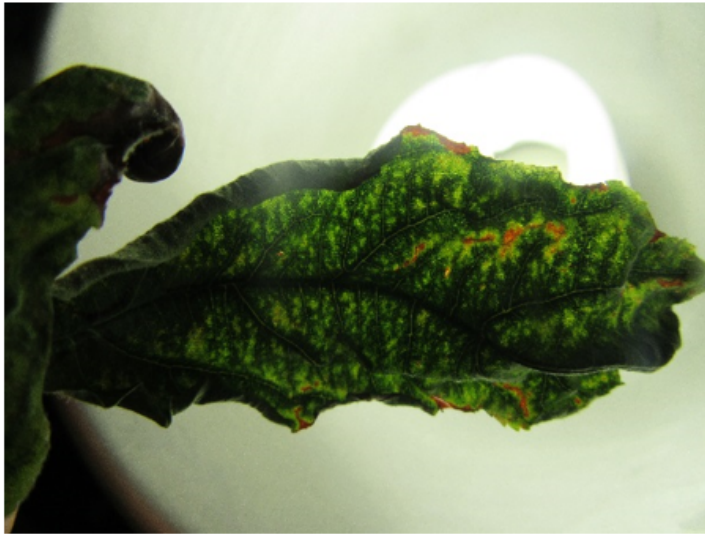
Reddish “progression line” around midrib of less-affected leaves



Outer end of shoot leaves less affected



Interveinal, marginal burn,
– agent mobile or water loss greater?



Translucent interveinal areas

