

The Efficacy of Outdoor Traps

Location, Placement and Timing

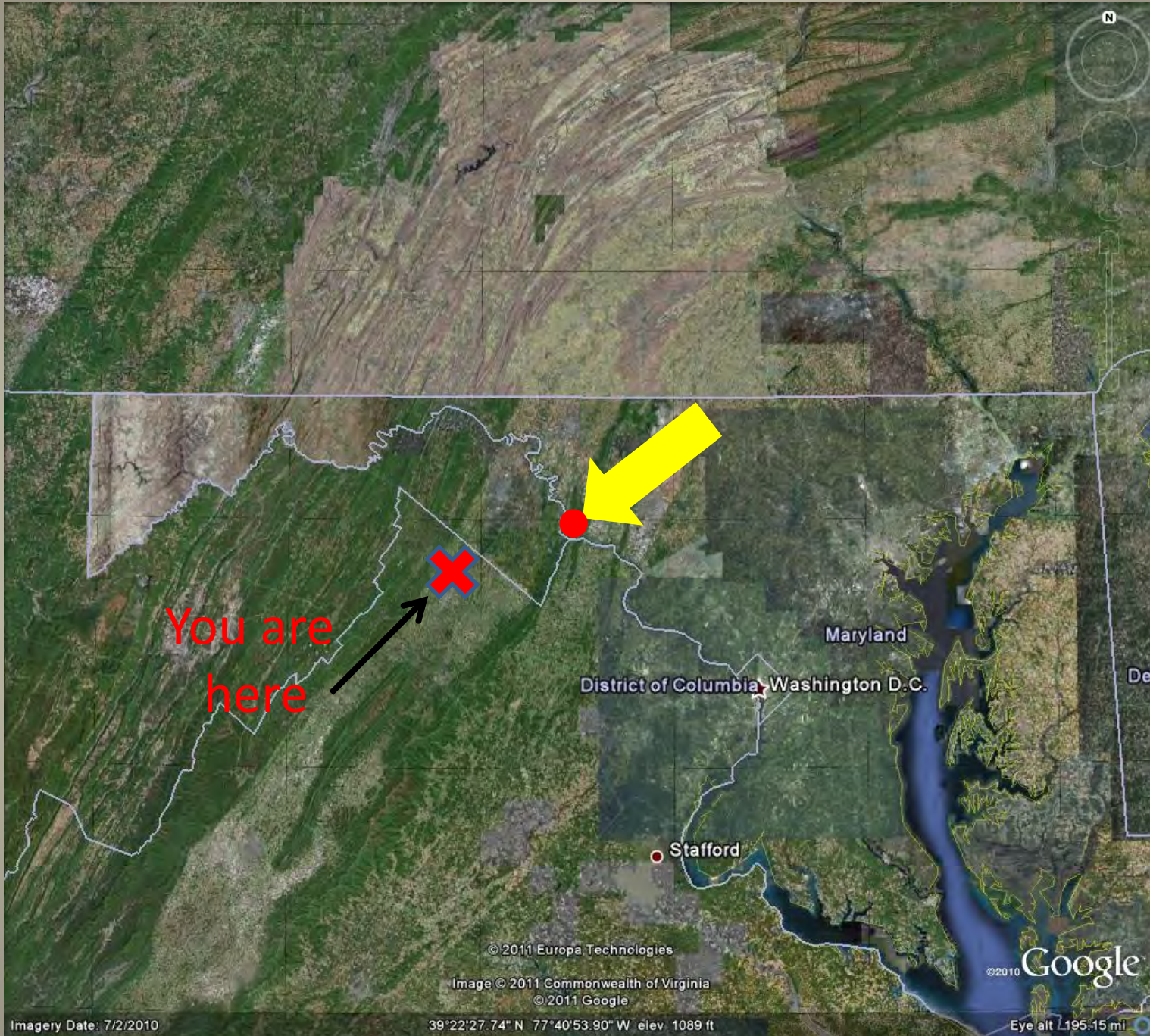


Doug Inkley, Ph.D.
Senior Scientist
National Wildlife Federation

Perspectives of a Backyard Gardener

Picture is B-BMSB (Before BMSB)





You are
here

© 2011 Europa Technologies

Image © 2011 Commonwealth of Virginia
© 2011 Google

Imagery Date: 7/2/2010

39°22'27.74" N 77°40'53.90" W elev 1089 ft

© 2010 Google

Eye alt 1195.15 mi



REUSABLE
Reutilizable

STINK BUG TRAP

Trampa Para Chinchas

• An odor-free pheromone trap for stink bugs
• Outdoor defense for the home and garden
• Una trampa inodora con feromonas para chinches
• Defensa exterior para la casa y el jardín

NON-TOXIC MODE OF ACTION
MODO DE ACCIÓN NO TÓXICO

RESCUE
Making pest control smarter™

RESCUE
Making pest control smarter™

REUSABLE
REUTILIZABLE

STINK BUG TRAP TRAMPA PARA CHINCHES

An outdoor defense for the home and garden
Una defensa exterior para la casa y el jardín

- Lures stink bugs with a pheromone attractant
- Odor-free to humans
- No killing agents - insects die inside the trap
- Bait is the chinchas con atrayente de feromona
- Es inodora para los seres humanos
- No utiliza sustancias venenosas. Los insectos se ahogan en la trampa



Making pest control smarter.®

Outdoor Stink Bug Trap Dos and Don'ts



**Who Reads
Directions?**

Location: where in landscape

Placement: positioning

Timing: seasonality

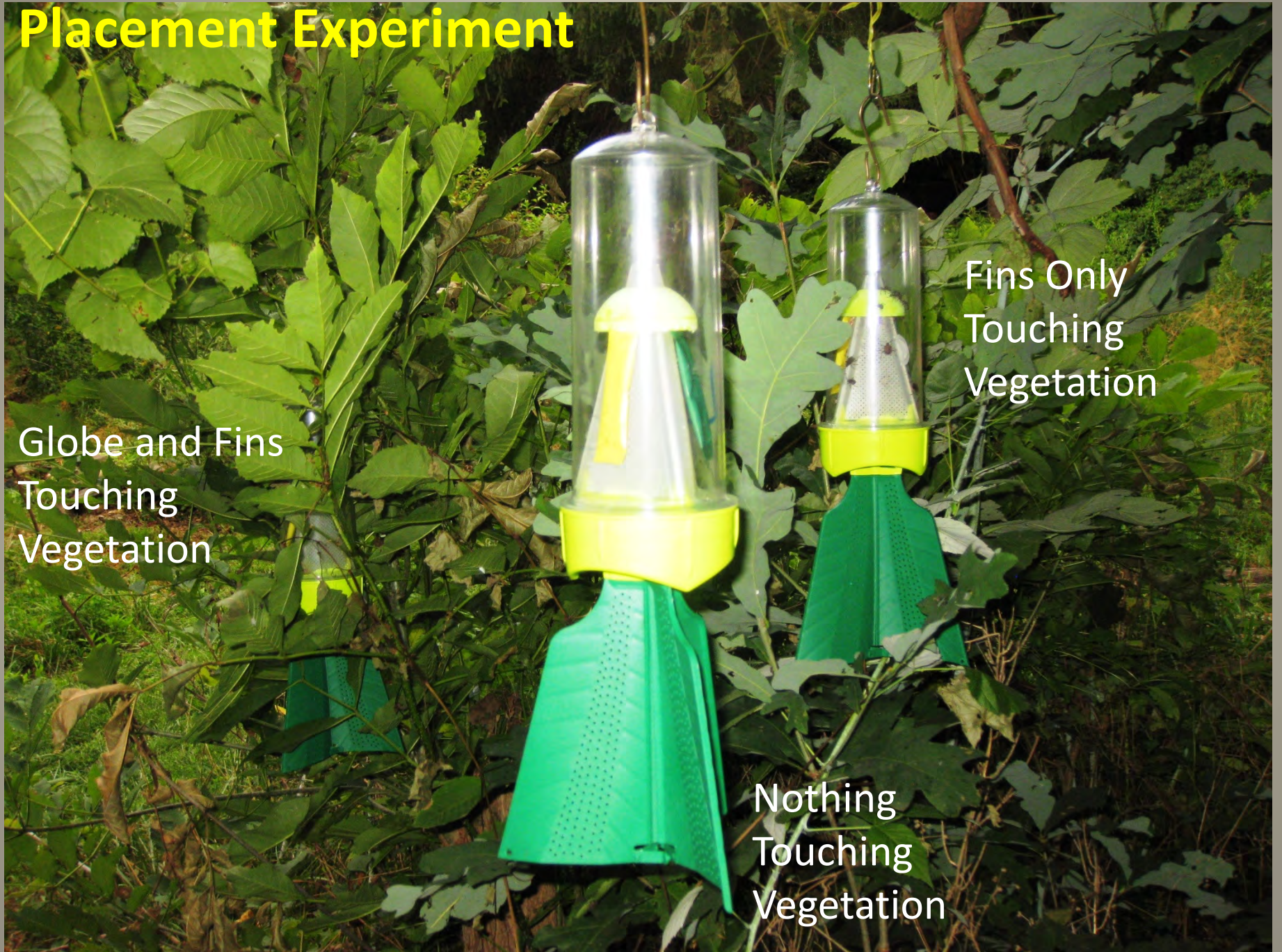


Placement Experiment

Globe and Fins
Touching
Vegetation

Fins Only
Touching
Vegetation

Nothing
Touching
Vegetation



Vegetation

None

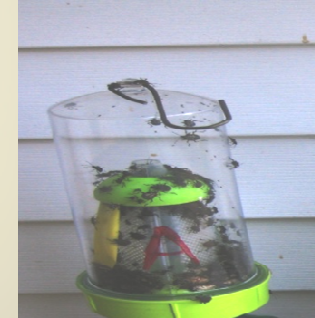
Fins &
Globe

Fins
Only

Day 1



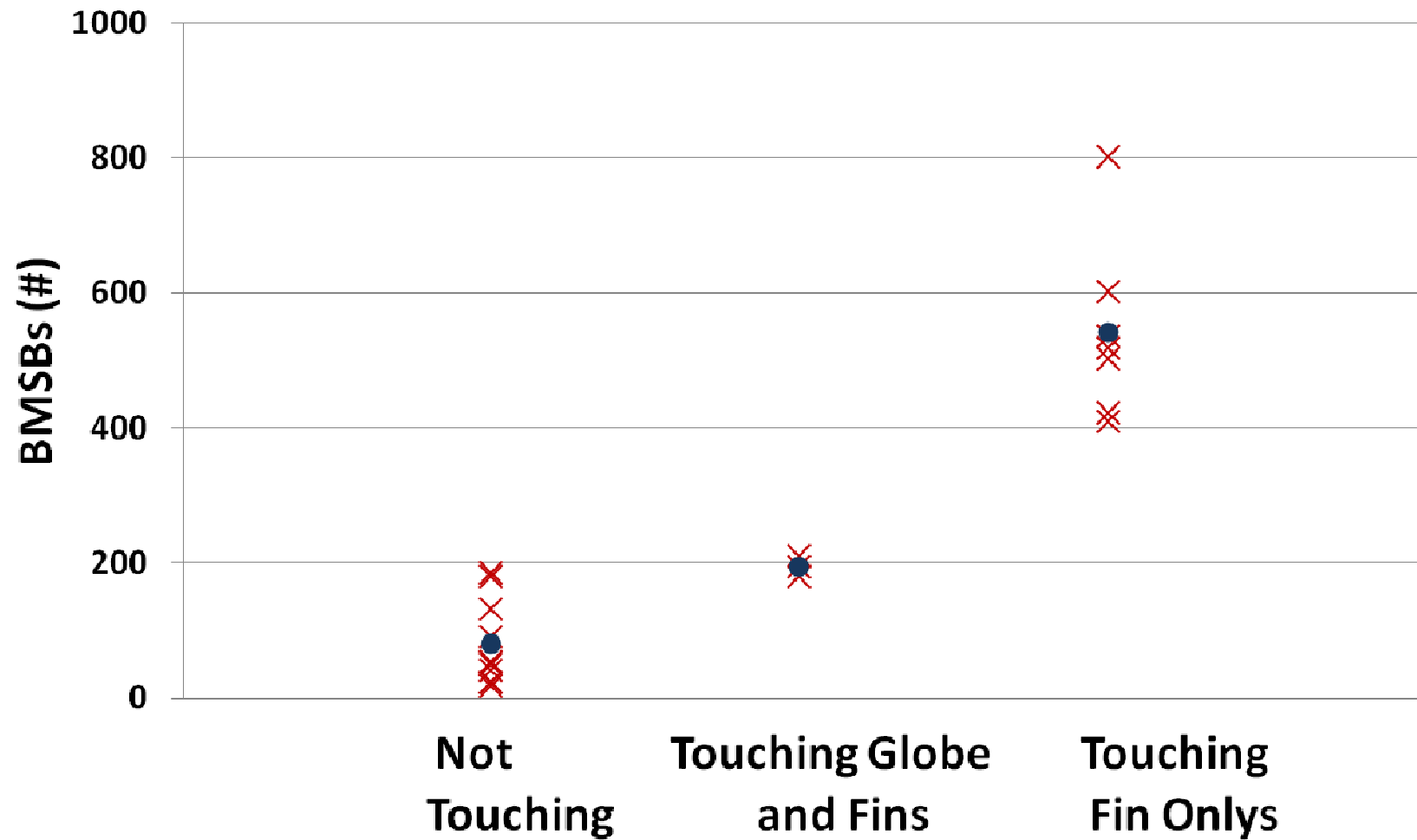
Day 2



Day 3



Rescue BMSB Traps (7/29-8/5)



2011

26,205 BMSBs Removed Indoors (Jan-June)

30,374 Trapped Outdoors (July-Oct)

56,579 Total

Major Damage

Asparagus

Tomatoes

Apples

No Apparent Damage

Potatoes

Lettuce

Rhubarb



CONCLUSIONS

BMSB outdoor traps effective at capture when properly:

- .located
- .placed
- .timed

Consumer Education

Garden Damage Still Significant

IPM could include:

- .trapping outdoors (summer)
- .removal indoors (winter)
- .Paulownia/Ailanthus removal
- .biological control
- .pesticides



Thanks!

